

# ROFOS

FIT THE DEEP



@ 2026

# RS X

This dry suit may look similar to all the other trilaminate dry suits, but it is unlike any other. The magic is revealed when you put it on. We have managed to create the first trilaminate dry suit that will follow you in every type of movement. A dry suit that is easy to manage in any position you assume underwater. More than a dry suit, it is a true second skin.



- Lightweight and elastic trilaminate.
- Reinforcements in the same material on: shoulders, elbows, forearms, seat, knees, shins, crotch and bib.
- Fully heat-taped interior.
- Two quadruple compartment pockets in Cordura®, self-draining, closed with high-strength Velcro and equipped with six internal elastic bands.
- Telescopic torso with quick-adjust crotch strap.
- Pre-formed knees to optimize movement.
- Front watertight plastic zip with protective bib closed with nylon zip.
- Low-profile rotating inlet valves, with central button, and automatic/manual discharge.
- Latex collar with 5 mm superstretch neoprene overcollar for greater comfort and thermal insulation.
- Choice of hood between Glide 8/5mm - 7/5mm - 5mm and 3mm.
- Built-in 3 mm neoprene booties with semi-rigid sole. Reinforcements on the instep and anti-slip velcro.
- Reinforced supports for possible p-valve on both legs.
- Elastic, adjustable braces, completely removable and equipped with a ring to insert the sleeves when the suit is not completely worn.
- Adjustable drawstring at the waist for a better fit.
- Supplied with a transport bag, anti-freeze polyurethane hose, adjustable braces, hood, talcum powder, zip lubricant.
- Weight 3.5 kg.



# RSX VERSION

There are 4 base RSx models: the historic RSX GRAY, the RSX BLACK - RED DRAGON version, and the latest addition, the REX WRECK.

The RSX Black version can also be customized with various overlays and the three available colors: Red, Gray, and Royal Blue.

The RSX WRECK version can be customized with the Red, Gray, and Royal Blue jacket colors with a black cover or classic overlay.



**RSX GRAY**



**RSX BLACK**



**RED DRAGON**



**RSX WRECK**

# COLOR RSX WRECK JACKET AND OVERLAY TYPE

Choose your jacket color from Red, Royal Blue, Smoke Gray, Black, or Gray.

Choose your overlay type from Classic or Cover.

Protection made from durable and stretchy trilaminate for maximum comfort and extreme protection.



**RED -COVER**



**BLU ROYAL - CLASSIC**



**GRAY - COVER**

# OVERLAY RSX BLACK

Top Classic and Cover in addition to the Red Dragon version.  
The standard stitching threads are black but you can choose different colors



**COVER**



**CLASSIC**



**TOP**

# RSX OPTIONS

**CUSTOMIZE YOUR DRYSUIT  
IN EVERY DETAIL**



- The diver can customize the trilaminate dry suits as he wishes, upon request and for a fee.
- Neck: the dry suits have a latex neck as standard, but it is possible to choose a neoprene neck and also opt for an interchangeable neck (silicone or latex).
- Wrists: the cuff is latex as standard, but you can prefer the interchangeable cuff, on which you can easily mount the dry gloves.
- Dry gloves and rings: it is possible to have the rings and/or dry gloves to mount on the dry suit.
- Valves: the basic option is with Si-tech valves but it is possible to request to mount Apeks valves.
- Boots: the neoprene boot is standard, but it is possible to choose the neoprene sock on which to place a Rock Boot boot.
- P-valve: the p-valve reinforcements are standard, but you can choose to have the suit already with the p-valve mounted.
- A CAVE version can be requested with reinforcements on the entire front of the torso and legs and holes for the electric heater cable.
- Overlay: the standard look is “all black” but different colors can be chosen for the overlay and for the threads.
- The colors of overlay and threads in the images do not faithfully represent the color of the final product.

## AVAILABLE COLORS OVERLAY RSX BLACK



## SEAMS COLORS AVAILABLE FOR EVERY MODEL EXCEPT THE RED DRAGON



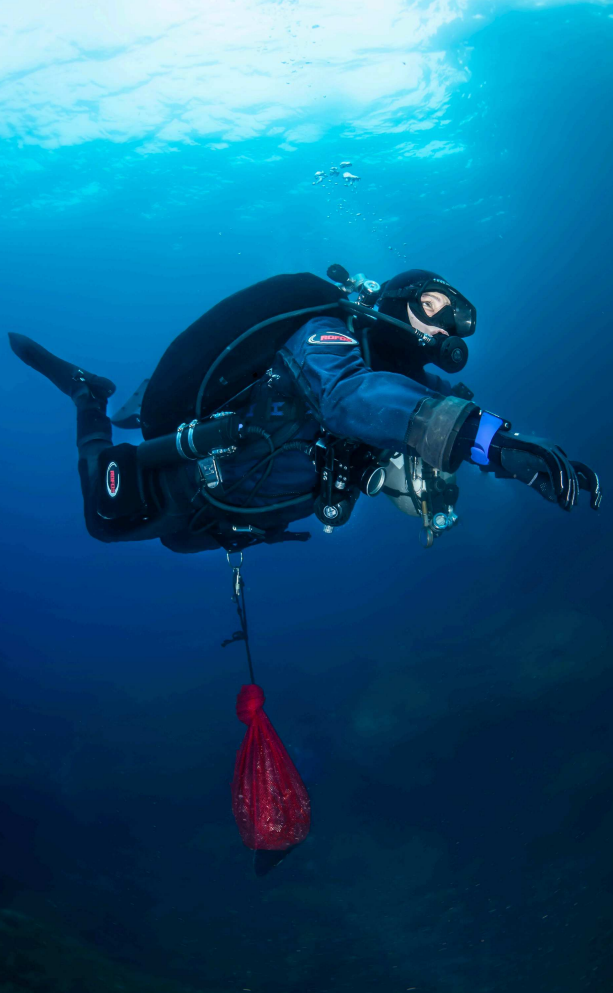


# RS 450 K

It is a trilaminate dry suit designed for those looking for an extremely warm and durable suit.

It can be a suit for life: it can accompany you on at least 1000 dives.

It has been our workhorse for years.



- Ferguson trilaminate with polyester linings.
- Cordura® reinforcements on: shoulders, elbows, forearms, seat, knees, shins, crotch and bib.
- Fully heat-taped interior.
- Two quadruple-compartment pockets in Cordura®, self-draining, closed with high-strength Velcro and equipped with six internal elastic bands.
- Telescopic torso with quick-adjust crotch strap.
- Preformed knees to optimize movement.
- Waterproof front plastic zip with protective bib closed with nylon zip.
- Low-profile rotating inlet valves, with central button, and automatic/manual discharge.
- Latex collar with 5 mm superstretch neoprene overcollar for greater comfort and thermal insulation.
- Choice of hood between Glide 8/5mm - 7/5mm - 5mm and 3mm.
- Built-in 3 mm neoprene booties with semi-rigid sole. Reinforcements on the instep and anti-slip velcro.
- Elastic, adjustable braces, completely removable and equipped with a ring to insert the sleeves when the suit is not completely worn.
- Adjustable drawstring at the waist for a better fit.
- Supplied with a transport bag, antifreeze polyurethane whip, talcum powder, zip lubricant.
- Weight 3.5 kg.



# OVERLAY

Overlay: the standard look is "all black" but you can choose different colors for the 3 different types of overlay: Top Classic and Cover  
The standard stitching threads are black but you can choose different colors



**COVER**

**CLASSIC**

**TOP**

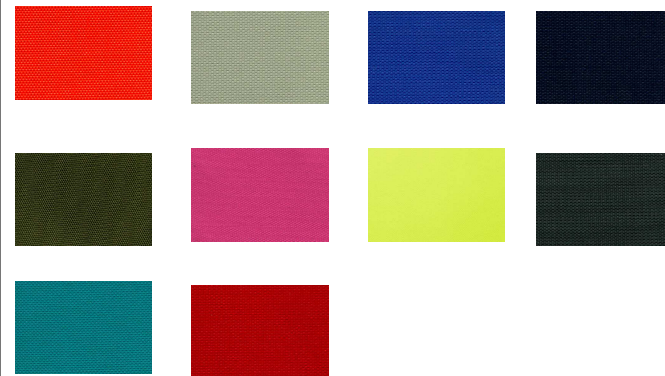
# RS 450 K OPTIONS

**CUSTOMIZE YOUR DRY SUIT  
IN EVERY DETAIL**

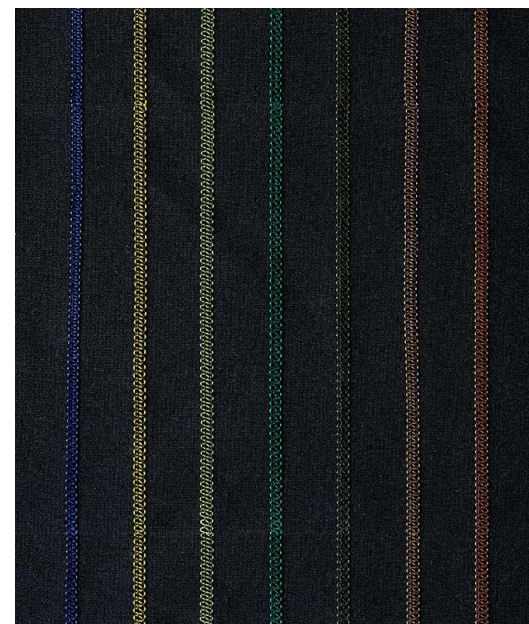


- The diver can customize the trilaminate dry suits as he wishes, upon request and for a fee.
- Neck: the dry suits have a latex neck as standard, but it is possible to choose a neoprene neck and also opt for an interchangeable neck (silicone or latex).
- Wrists: the cuff is latex as standard, but you can prefer the interchangeable cuff, on which you can easily mount the dry gloves.
- Dry gloves and rings: it is possible to have the rings and/or dry gloves to mount on the dry suit.
- Valves: the basic option is with Si-tech valves but it is possible to request to mount Apeks valves.
- Boots: the neoprene boot is standard, but it is possible to choose the neoprene sock on which to place a Rock Boot boot.
- P-valve: the p-valve reinforcements are standard, but you can choose to have the suit already with the p-valve mounted.
- A CAVE version can be requested with reinforcements on the entire front of the torso and legs and holes for the electric heater cable.
- Overlay: the standard look is “all black” but different colors can be chosen for the overlay and for the threads.
- The colors of overlay and threads in the images do not faithfully represent the color of the final product.

## OVERLAY AVAILABLE COLORS



## THREAD COLORS



450K



# RS 360

a trilaminate dry suit made with a super light and resistant fabric.

Its weight of only 3Kg and the incredible speed in drying after each dive, make this suit ideal for travel.



- Super lightweight trilaminate, with nylon outer lining and polyester inner lining. Cordura® reinforcements on: shoulders, elbows, forearms, seat, knees, shins, crotch and bib.
- Fully heat-taped interior.
- Two quadruple-compartment pockets in Cordura®, self-draining, closed with high-strength Velcro and equipped with six internal elastic bands.
- Telescopic torso with quick-adjust crotch strap.
- Pre-formed knees to optimize movement.
- Front watertight plastic zip with protective bib closed with nylon zip.
- Low-profile rotating loading valves, with central button, and automatic/manual unloading.
- Latex collar with 5 mm superstretch neoprene overcollar for greater comfort and thermal insulation.
- Choice of hood between Glide 8/5mm - 7/5mm - 5mm and 3mm.
- Built-in 3 mm neoprene booties with semi-rigid sole. Reinforcements on the instep and anti-slip velcro.
- Reinforced supports for possible p-valve on both legs.
- Elastic, adjustable braces, completely removable and equipped with a ring to insert the sleeves when the suit is not completely worn.
- Adjustable drawstring at the waist for a better fit.
- Supplied with a transport bag, anti-freeze polyurethane whip, talcum powder, zip lubricant.
- Weight 3 kg.



# OVERLAY

Overlay: the standard look is "all black" but you can choose different colors for the 3 different types of overlay: Top Classic and Cover  
The standard stitching threads are black but you can choose different colors



**COVER**



**CLASSIC**



**TOP**

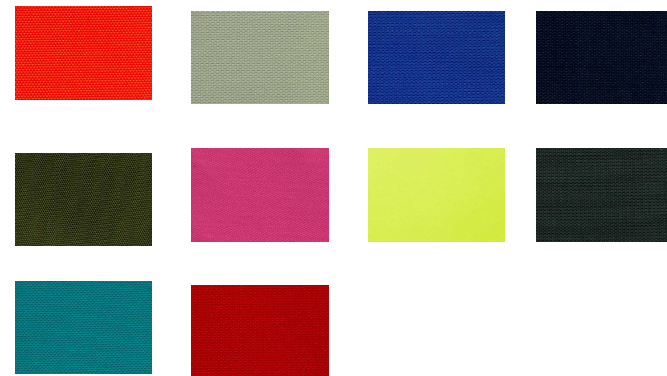
# RS 360 OPTIONS

**CUSTOMIZE YOUR DRY SUIT  
IN EVERY DETAIL**

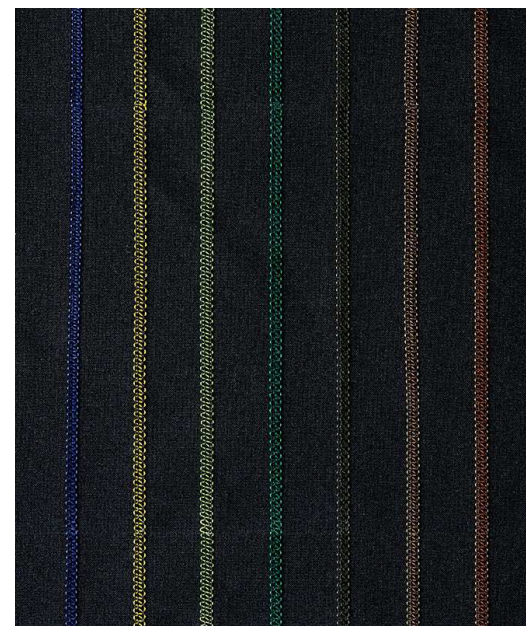


- The diver can customize the trilaminate dry suits as he wishes, upon request and for a fee.
- Neck: the dry suits have a latex neck as standard, but it is possible to choose a neoprene neck and also opt for an interchangeable neck (silicone or latex).
- Wrists: the cuff is latex as standard, but you can prefer the interchangeable cuff, on which you can easily mount the dry gloves.
- Dry gloves and rings: it is possible to have the rings and/or dry gloves to mount on the suit.
- Valves: the basic option is with Si-tech valves but it is possible to request to mount Apeks valves.
- Boots: the neoprene boot is standard, but it is possible to choose the neoprene sock on which to place a Rock Boot boot.
- P-valve: the p-valve reinforcements are standard, but you can choose to have the dry suit already with the p-valve mounted.
- A CAVE version can be requested with reinforcements on the entire front of the torso and legs and holes for the electric heater cable.
- Overlay: the standard look is “all black” but different colors can be chosen for the overlay and for the threads.
- The colors of overlay and threads in the images do not faithfully represent the color of the final product.

## OVERLAY AVAILABLE COLORS



## THREAD COLORS



360



# CAVE

Increase your protection for extreme environments.

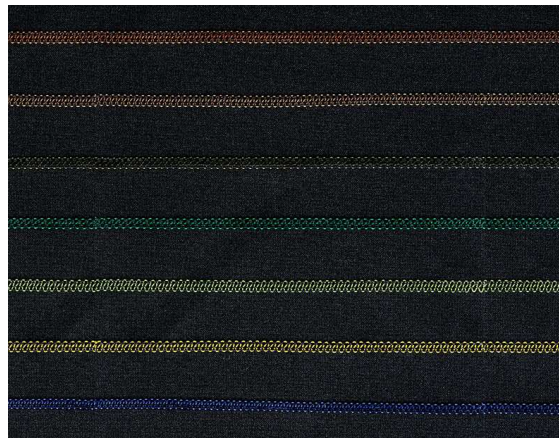
The Cave Kevlar version makes your drysuit indestructible.



## CAVE OPTION FOR ROFOS TRILAMINATES

- For all trilaminate drysuits in the RS line, you can request the CAVE option, designed for the toughest diving conditions and structured for cave or wreck diving.
- The reinforcements cover the shoulders, elbows, forearms, seat and crotch, but also the entire front of the torso and legs. There are also two holes on the chest for the electric heater cable.
- The standard look is “all black” but you can choose different colors for the wires.
- KEVLAR The reinforcements are available in Kevlar for all trilaminate drysuits in the RS line.
- INDESTRUCTIBLE

## THREAD COLORS



# DRYSUITE OPTIONS

EVERY DETAIL MAKES THE  
DIFFERENCE



## THE BEST OPTIONS FOR YOUR DRYSUITE

- **Neck:** drysuits have a latex neck as standard, but you can choose a neoprene neck and also opt for an interchangeable neck (silicone or latex).
- **Wrists:** the cuff is latex as standard, but you can prefer the interchangeable cuff, on which you can easily mount dry gloves.
- **Dry gloves and rings:** you can have rings and/or dry gloves to mount on the suit.
- **Valves:** the basic option is with Si-tech valves but you can request to mount Apeks valves.
- **Boots:** the standard option is the neoprene boot, but you can choose the neoprene sock on which to place a Rock Boot boot.
- **P-valve:** the p-valve reinforcements are standard, but you can choose to have the suit already with the p-valve mounted.



# ARTIC

Artic is a line of fleece undersuits, perfect for trilaminate dry suits.

Warm, soft, stretchy in two sizes and compact, it allows maximum freedom of movement.

The line includes two one-pieces, a vest and a pair of socks.



## ONE-PIECE

Two large pockets, with a fleece layer on the outside and a thinner layer on the inside to be warm but not bulky. A chest pocket closed with a zipper. Front zipper with protected double slider. Ankle gaiters. Elasticated cuffs. Pre-formed knee. Hole on the chest for the heater cable. Holes for the p-valve on both legs Polartec® Power Stretch 539 gr/m<sup>2</sup>

## VEST AND SOCKS

Vest, socks and the heavy one-piece, made of Polartec® Power Stretch 539 gr/m<sup>2</sup> are perfect for diving in cold water with trilaminate dry suits.

### Vest

Hole on the chest for the heater cable.



STAY WARM IN ANY SITUATION.



# HEATING SYSTEM

- Compact
- No stand required
- Highly durable
- Perfect for any situation

## HEATING SYSTEM

Heating power: 32 W

Heat zones: front and back

Heat settings: high, medium, low via wrist remote

Tactile feedback: remote control + vest

Batteries: 2 included (11.1 V, 5000 mAh battery)

Maximum operating time: 360 minutes

Maximum operating depth: 100 m (300 ft)

Fabric: neoprene softshell

Set contains: 1 heated vest

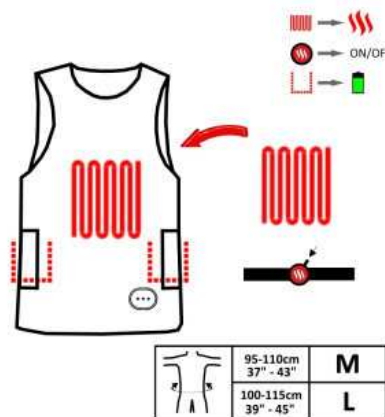
1 side belts that extend the size of the vest

2 batteries

1 charger

1 wrist remote control

1 practical carrying and storage case





# ROFOS

FIT THE DEEP

**ROFOS S.R.L.**

**Via Ernesto Caorsi, 49/2, 16031 Sori GE**

**Phone: 0185 702108**

**Mobile: +39 335 66 86 435**

**mail: [info@rofos.com](mailto:info@rofos.com) - [amministrazione@rofos.com](mailto:amministrazione@rofos.com)**

**P.Iva: 02901900999**

